



Balsam Moon Preserve

**CABIN
PACKAGE**

3148 Bungo Creek Ln SW, Pine River, MN 56474
email: BalsamMoon3148@gmail.com 218-587-3808
balsammoonpreserve.wixsite.com/balsam

RIP Retreat: Relax, Inspire, Peaceful



(2-7 days) \$50 / night / unit (\$100 / night / whole building)
Up to 3 people per unit (2 units total)

Need renewal? Need a respite? Need quiet space to contemplate & create surrounded by Red Pines tucked in the woods? This space is ideal for inspiring the artist within, resting, renewing, creating, unplugging in the peaceful solitude of nature. Whether you're in the woods, sitting by Bungo Creek with babbling sounds of water, hanging with the chickens, walking the labyrinth or through the gardens, you are sure to feel a sense of peace, nurturing, renewal, inspiration.

Cabin Rental May-October

\$50 / night / cabin (each unit accommodates up to 3 people)

CABIN AMENITIES

Access to trails, labyrinth, paddleboat on the pond, campfire by the pond, gardens, shower/sauna (wood provided), site tour, visit /care for chickens
Moonbeam Balm unit features full size double bed, can add single
Peaceful Pines unit has 2 single beds, can add single.
Small table and 2-3 folding chairs, comfy chairs
Coffee pot, electric tea kettle, toaster, coffee, tea, hot cocoa, sugar, non-dairy creamer, mugs, utensils.
composting toilet & washing station (easy to use, shared between 2 units)
Wood stove w/wood provided for heat as needed, small fan available.
Linens provided. Clothes line outside
Quiet Time 10pm – 8am

MAIN RESIDENCE ROOMS for January – April: private room, both standard plumbing bathroom & composting toilet, solar furnace & wood-fired furnace for heat

MEALS OPTION (3/day): \$25/person/day (\$15/child under age 12/day)

Coffee, tea, hot cocoa, provided in cabin.

Meal package: includes three meals/day and may or may not include meat. Organic food is accessed from the farm and local meat sources. All meals are home-cooked. They can be adjusted for gluten free and / or vegetarian when communicated at time of reservation.

PREPARE OWN MEALS: (May-October) – you may bring your own food & outdoor cooking equipment and prepare your own meals near the cabin. Table / Picnic bench provided (may use the main campfire ring by the pond). **NO COOKING ALLOWED IN THE CABIN.**





Cordwood Cabin – 2 units, shared bathroom – composting toilet & wash station

Moonbeam Balm Unit (west end)



Features full size double bed, can add single. Small cottage table and folding chairs. Coffee pot, electric tea kettle, toaster, coffee, tea, hot cocoa, sugar, non-dairy creamer, mugs, utensils, small fan.



Composting toilet bathroom



Cordwood Sauna & Shower



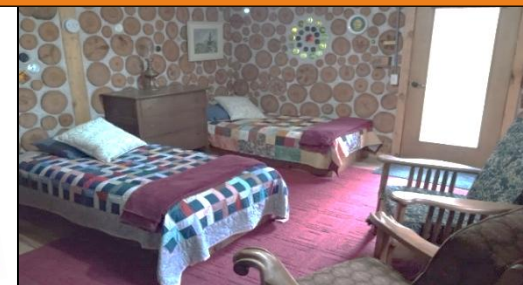
Walk-in shower with on-demand water heater.

Sauna wood provided.



Main residence on the pond. Meals can be with residents, or cook your own outside by the cabin.

Peaceful Pines Unit (east end)



Features two single beds, can add another single, comfy chairs. Small cottage table and folding chairs. Coffee pot, electric tea kettle, toaster, coffee, tea, sugar, non-dairy creamer, mugs, utensils, small fan..

